



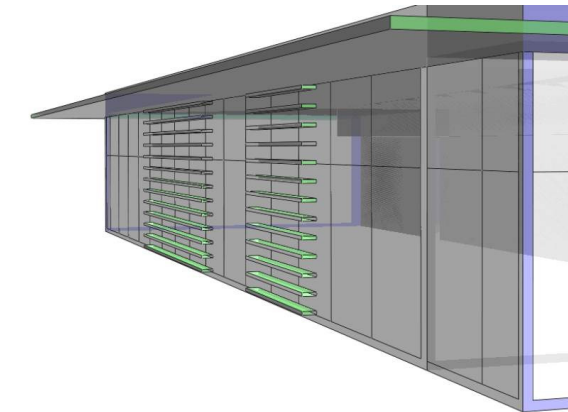
A new build Café in the grounds of an educational facility in the West Sussex countryside. AMA appointed for full MEP services design and Part L compliance duties.

Client: Religious Education Facility
Value: £1.3 million
Date: 2015



The countryside location is visually sensitive and to minimise the impact of the Café it is partially set within the ground and has a green roof; no services could be located on the roof. Site constraints mean that all systems were to be electric only.

AMA design included an innovative and highly efficient air source heat pump for heating, cooling and hot water. 17kWp solar photovoltaic array is installed on site. We used Revit modelling for services visualisations. IES thermal dynamic modelling was used to optimise shading design and for Part L compliance.



Key points:

- Full MEP & Part L compliance duties
- Visually sensitive site
- Extensive Revit and IES energy modelling
- High efficiency heat pump system
- 17kWp PV installation



No 5 Level 5 (South)
New England House
New England Street
Brighton BN1 4GH
T +44 (0)1273 601759
F +44 (0)1273 604319

Argent House
Wild's Rents
London SE1 4QG
T +44 (0)20 7043 4634
F +44 (0)20 7378 0036