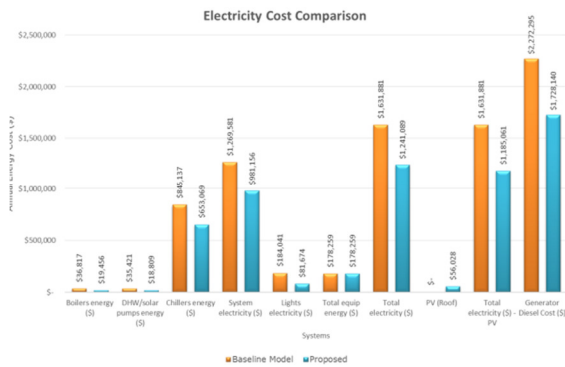


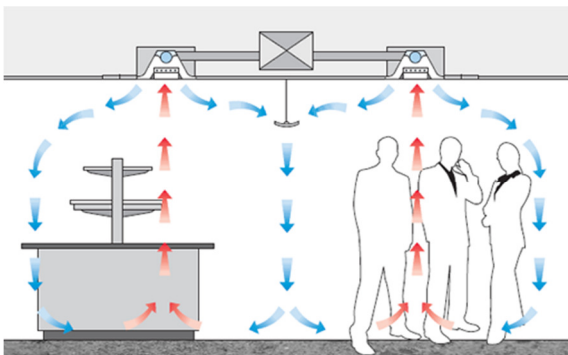
A new 15 storey east African regional head office building for the Standard Chartered Bank in Accra, Ghana. AMA carried out an energy options assessment and feasibility study.

Client: Standard Chartered Bank
Date: 2014

Project challenges were related to the local unsettled energy market with frequent power outages and no reliable energy supply.



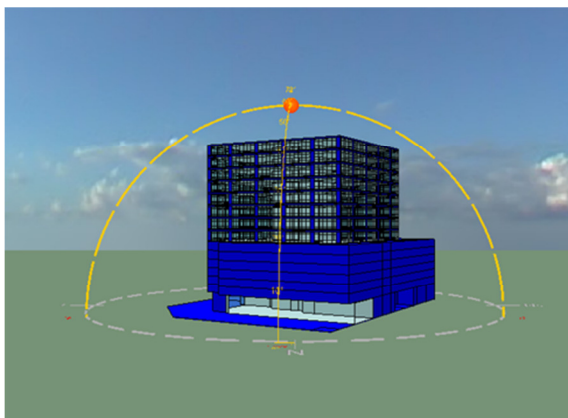
AMA methodology included an energy analysis by IES VE thermal simulation, assessment of onsite power generation, review of low carbon systems, renewable energy technologies and options Life Cycle Cost analysis.



The study established energy savings potential of 18% with the inclusion of most feasible options. Systems payback was around 8 years.

Key points:

- Site location with power outages and no reliable energy supply
- Energy analysis to establish potential energy savings by energy efficiency and inclusion of renewable energy
- Feasibility study of energy options



No 5 Level 5 (South)
New England House
New England Street
Brighton BN1 4GH
T +44 (0)1273 601759
F +44 (0)1273 604319

Argent House
Wild's Rents
London SE1 4QG
T +44 (0)20 7043 4634
F +44 (0)20 7378 0036